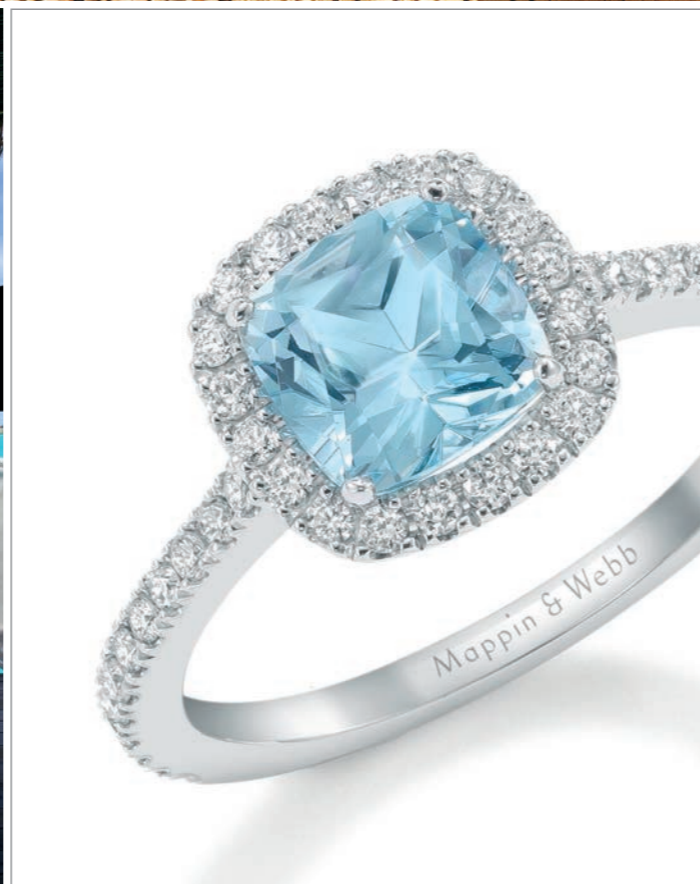


your
Media London

MEDIA PACK 2015



Your gateway to the world of luxury...



Contents

3 About Us

4 Your Docklands & City and Your Stratford City

5 Your West End Series

6 Rates and Production Information



YOUR MEDIA LONDON

Your Media London is a publishing company which is built upon a wealth of experience gained within the regional media market.

Operating from our base in the busy commercial centre of Docklands, we are well sited to provide local and national advertisers with a premier publishing proposition to meet their marketing and campaign needs.

The prime goal for us is to provide segmented audiences with a comprehensive, luxury lifestyle publication and online presence. Your Docklands & City was the first publication to launch out of the stable and has gained a respected reputation from both readers and advertisers alike.

Joined by titles covering Stratford and London's West End, targeting is aimed at the ABC1 population living and working within individually distinct marketplaces with a total readership of 161,000.

The group portfolio includes;

- Docklands & City
- Mayfair
- Kensington & Chelsea
- Marylebone
- Stratford City
- West End
- Knightsbridge
- St. John's Wood

These quality, perfect bound, A4 magazines offer their readers a wealth of luxury goods and innovative articles which impact upon their lives.

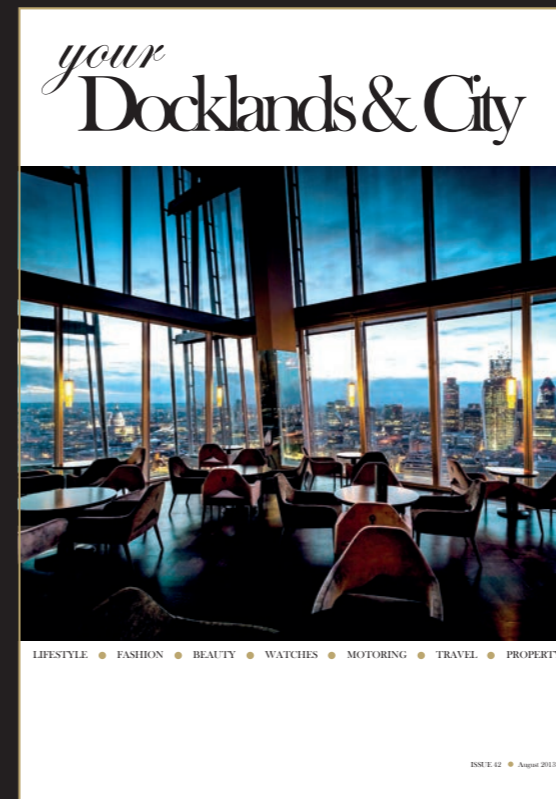
Your Docklands & City Your Stratford City Magazine

Your Docklands & City and Your Stratford City Magazines aim to deliver a high quality luxury product free of charge across the Docklands, Stratford and City of London areas. The publication provides a spectrum of luxury lifestyle subjects including news, watches, jewellery, fashion, technology, local and international travel, restaurants, high performance cars and local & international property.

Targeting the AB1 population living and working within the two financial districts of Docklands and the City of London this magazine ensures that your advertising message is being read by your target audience. With a monthly print run of 20,000 copies with an additional 10,000 Your Stratford City copies, a high level of readers per copy combined with online readership, you can be assured of your campaign message success.

Getting your message seen is of paramount importance and that is why we have chosen our distribution channels carefully. Published on a monthly basis, the two publications are available via a network of free distribution outlets including premier restaurants, leisure facilities, retail outlets, international banks, major corporations, hotels and prestige wharfs and apartment buildings. Your Docklands & City and Your Stratford City are also supported online with a full electronic edition or available by postal or electronic subscription (15,000).

For further information on your specific requirements contact our sales department who will be happy to discuss your campaign and promotional needs. Telephone 020 3203 0002.



Major Brand Advertisers



Your gateway to the world of luxury...



Your West End Magazines

Bringing a fantastic, clean breath of fresh air to the West End, Mayfair, Marylebone, Knightsbridge, Kensington & Chelsea and St. John's Wood, as well as Regent's Park, Maida Vale, Hampstead & Highgate, Bayswater W2 and Fitzrovia & Soho's free magazine market. Building on the principles of the Your Docklands & City and Your Stratford City publications, this series which launched in 2012 provides a high quality product that is not only informative and enjoyable to read, but will cost you nothing to indulge in. We aim to deliver a wide ranging product across a number of important subjects, from luxury items and opulent travel to restaurants bars and entertainment venues. You can be sure there will be something inside for every reader.

These luxury publications target the AB1 population living and working within the distribution footprint of the West End of London to ensure that your message is being seen by the people you are targeting. Our in-house distribution provides us with the unique opportunity to control precisely where you are seen and will endeavour to accommodate any specific requests on distribution within the area. With a monthly audience of 51,000 copies, you can be assured of your campaign success. Your West End is also supported online with a full electronic edition or is available by postal subscription.

For further information on your specific requirements contact our sales department who will be happy to discuss your campaign and promotional needs. Telephone 020 3203 0002.

Rates & Production

Full Page

Trim:
210mm x 297mm
Bleed*:
216mm x 303mm
Type area:
190mm x 270mm

Mechanical Specifications

Double Page Spread

Trim:
420mm x 297mm
Bleed*:
426mm x 303mm

Print Specifications :

Outside cover - gloss coated 350 gsm

Inside pages - gloss coated 100 gsm

***Bleed** -3mm/3mm/3mm/3mm

West End Series	Kensington & Chelsea, Knightsbridge, Mayfair	Marylebone, St. John's Wood, West End	Group Booking
Full Page (Trim: 210mm x 297mm / Bleed*: 216mm x 303mm / Type Area: 190mm x 270mm)	£3,000	£3,000	£5,100
Double Page Spread (Trim: 420mm x 297mm / Bleed*: 426mm x 303mm)	£5,300	£5,300	£7,800
<i>Series Discount</i>	4 Issues: 10%	6 Issues: 20%	12 Issues: 30%
<i>Special Positions</i>			
Outside Back Cover	£4,600	£4,600	£6,900
Inside Front Cover DPS	£7,000	£7,000	£10,500
First Right/Left Hand Page	£3,500	£3,500	£5,300
<i>Inserts</i>	Loose inserts (per 1,000, minimum 5,000)		£160
<i>Circulation</i>	28,500	22,500	51,000

Docklands & Stratford	Docklands & City	Stratford City	Group Booking
Full Page (Trim: 210mm x 297mm / Bleed*: 216mm x 303mm / Type Area: 190mm x 270mm)	£2,800	£2,800	£3,700
Double Page Spread (Trim: 420mm x 297mm / Bleed*: 426mm x 303mm)	£4,600	£4,600	£6,400
<i>Series Discount</i>	4 Issues: 10%	7 Issues: 15%	12 Issues: 25%
<i>Special Positions</i>			
Outside Back Cover	£3,600	£3,600	£5,400
Inside Front Cover DPS	£2,900	£2,900	£4,300
First Right/Left Hand Page	£2,800	£2,800	£4,100
<i>Inserts</i>	Loose inserts (per 1,000, minimum 5,000)		£100
<i>Circulation</i>	20,000	10,000	30,000

Exclusive Outlets

Waitrose

Belgravia
Marylebone
St. Katherine Docks

Retail Outlets

Baker Street
Bond Street
Burlington Arcade
Canary Wharf
New Bond Street
Marylebone High St
Mayfair
Mount Street
Regent Street
Royal Exchange
St John's Wood High St
Strand WC2
Westfield (Stratford)

Other Outlets

City Airport – airside

Institution and Banking Outlets

Bank of America
Barcap
Barclays
B.P
Broadgate Estate
Citi Bank
Clifford Chance
Credit Suisse
Deutsche Bank
FCA
Herbert Smith
J.P. Morgan
KPMG
Lloyds
Morgan Stanley
RBS
Travis Smith





your
Media London
London's Luxury Magazine Group

Residential Outlets

55 Park lane
Berkeley House
Capital Apartments
Cascades
Chelsea Harbour development
Burrell's Wharf
Kings Quay
Knightsbridge Apartments
Landmark
Mill Harbour
New Providence Wharf
No1 Hyde Park
Orchard Court W1
Pan Peninsula
Portland Place
Welbeck Mansion

Health Club and Spa Outlets

Langham Hotel Spa
Mandarin Oriental
Reebok – Canary Wharf
Third Space - Marylebone
Third Space –Soho
Virgin Active Group

Hotel Outlets

Browns
Carlton Towers – Jumeirah
Claridge's
Four seasons
Grosvenor
Hilton Group
Hyatt
Intercontinental
Langham
Mandarin Oriental
Marriot Group
Mayfair
Mont Calm
Ritz
Savoy

Restaurant Outlets

34 restaurant
Caprice
Casper's Savoy
Gaucho Branches
Langan's Brasserie
Novikov
Royal China
Square

Group Editor
Emma Tompkins
emma.tompkins@yourmedialondon.com

Associate Director
Lyndon Ford
lyndon.ford@yourmedialondon.com

Commercial Director
Jason Plom
jason.plom@yourmedialondon.com

Sales Director
Jennifer Tompkins
jennifer.tompkins@yourmedialondon.com

Property Director
Graham Parker
graham.parker@yourmedialondon.com

Brand Director
Nick Edgley

Marketing
Pranjna Zen
Adrian Chiu

Circulation and Marketing
Michael Mundell-Poole

Circulation and Production
Kevin Rowden

Managing Director
Paul Gregory

Contributors

Drink
Salvatore Calabrese
Edward Gerard - Harrods Wine

Fashion
Francesca Barrow - Faconner

Finance
Matt Wong

Fitness
Reebok Sports Club

Food
Harrods Food & Drink

Property
Kate Gould - Kate Gould Gardens
Savills

Watches and Jewellery
Ken Kessler
Jitesh Shah - New Cavendish Jewellers
Helen Erhabor - PLAX Jewellery

your
Media London